



play it **forward**

# COMMUNITY CAMPUS

*A home for sport, learning and opportunity*

Play it Forward is a UK-registered charity and Zambian NGO creating opportunities for young people through sport, education and community programmes.

Founded in 2018, we work with children and young people in Livingstone and surrounding communities, many of whom face significant barriers to opportunity. Using football as a gateway, we deliver programmes in education, digital skills, health and nutrition.

Our goal is simple: to create safe spaces where young people can grow in confidence, develop practical skills and build brighter futures.

Today, Play it Forward supports over 2,500 young people each year, working closely with local communities to help the next generation reach their full potential.





# THE OPPORTUNITY

Across Zambia, many young people grow up without access to safe sports facilities, quality learning environments or pathways into employment.

In Livingstone, where Play it Forward works, these challenges are particularly visible. Schools are often overcrowded, access to safe sports facilities is limited, and there are few spaces where young people can learn, play and develop outside the classroom. Basic facilities are often missing - for example, girls frequently have no private place to change before training and are forced to change behind bushes.

Play it Forward has spent the past several years building programmes that directly respond to these challenges. The next step is creating a permanent home where these programmes can grow and reach far more young people.

In 2025, Play it Forward secured land in Livingstone to build a community sports and education campus — a space designed to bring sport, learning and community opportunity together in one place.





# A PERMANENT HOME



The new Play it Forward Community Campus will bring together sport, learning and community in one place.

Located on a 4-hectare site on the edge of Livingstone, the campus will include high-quality sports facilities, classrooms, digital learning spaces and community areas. It will also become the home of the Play it Forward FC men's and women's teams.

Designed to support 10,000+ young people each year, the campus will enable Play it Forward to expand its programmes and create new opportunities for education, employment and community engagement, while providing much-needed sports and community facilities for the wider Livingstone community."



# OUR VISION

- A vibrant community campus supporting the holistic development of young people through football, education, health and life-skills programmes.
- Strong partnerships with local schools, other NGOs, and the Zambian Ministries of Education and Health to maximise long-term impact.
- Clear pathways for young people to progress into elite football, higher education scholarships and meaningful employment.
- Equal opportunities for girls and boys, empowering young people to become leaders and positive role models in their communities.





# COMMUNITY-LED DESIGN

The Play it Forward Community Campus has been shaped through a participatory design process involving young people, staff and members of the wider Livingstone community.

Working with the social design organisation **Rise International**, Play it Forward hosted workshops and consultations to explore how the campus could best serve local needs. Participants shared ideas about sports facilities, learning spaces, safety and how the campus could be inclusive and welcoming for everyone.

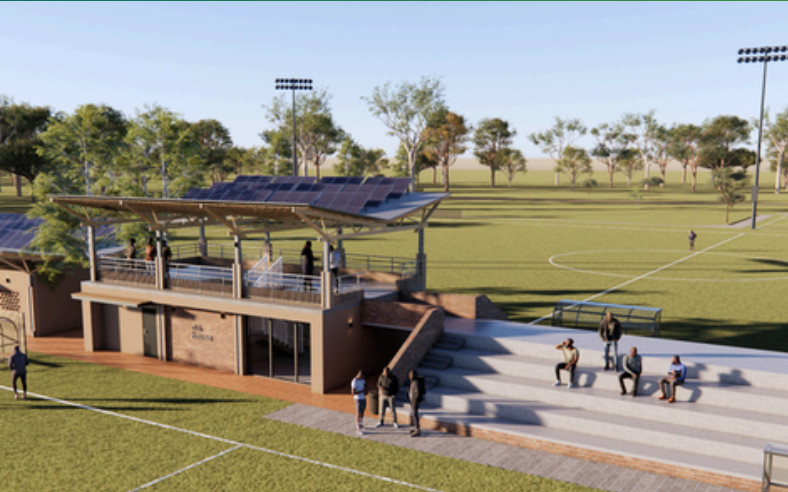
The masterplan has been developed by **Leaf Studio Architects**, a Livingstone-based firm that has been closely involved in this community process and will continue consulting local stakeholders throughout the project.

During construction, Play it Forward will prioritise local labour, contractors, artisans and artists, while also creating opportunities for young people, former players and their families to contribute to the build.





# THE CONCEPT FOR THE CAMPUS



The Community Campus is designed to bring together sport, learning and community activity in one integrated space:

## Sports Facilities

- 1 x 11-a-side artificial football pitch
- 1 x 11-a-side grass football pitch with stands
- 1 x 5-a-side artificial football pitch
- Netball & basketball multi-purpose court
- Gym and strength & conditioning space
- Changing rooms and spectator facilities

## Education & Community Spaces

- Digital Skills Hub
- Classrooms and library
- Conference and training spaces

## Community & Social Enterprise

- Restaurant and café
- Market pavilion
- Kitchen and canteen
- On-site accommodation

## Campus Management

- Administrative offices for Play it Forward staff
- Main entrance gate and security guard post





# KEY PROJECT INFORMATION

 **4.11 acres**

Site Size

**£3.8 million**

Total Project Cost

**£1.6 million**

Phase 1 Target



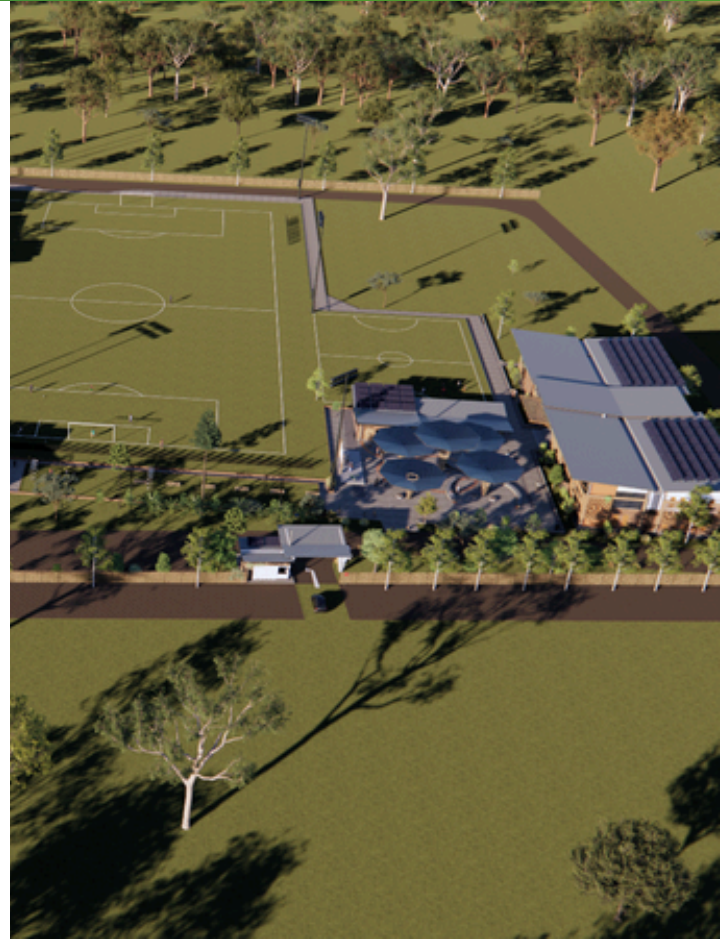
**£1 MILLION MATCH FUNDING  
ALREADY COMMITTED**

Every new donation to the Community Campus will be matched £-for-£ by Play it Forward Founder Oliver Brendon, doubling the impact of every contribution.



Construction Start (Phase 1)

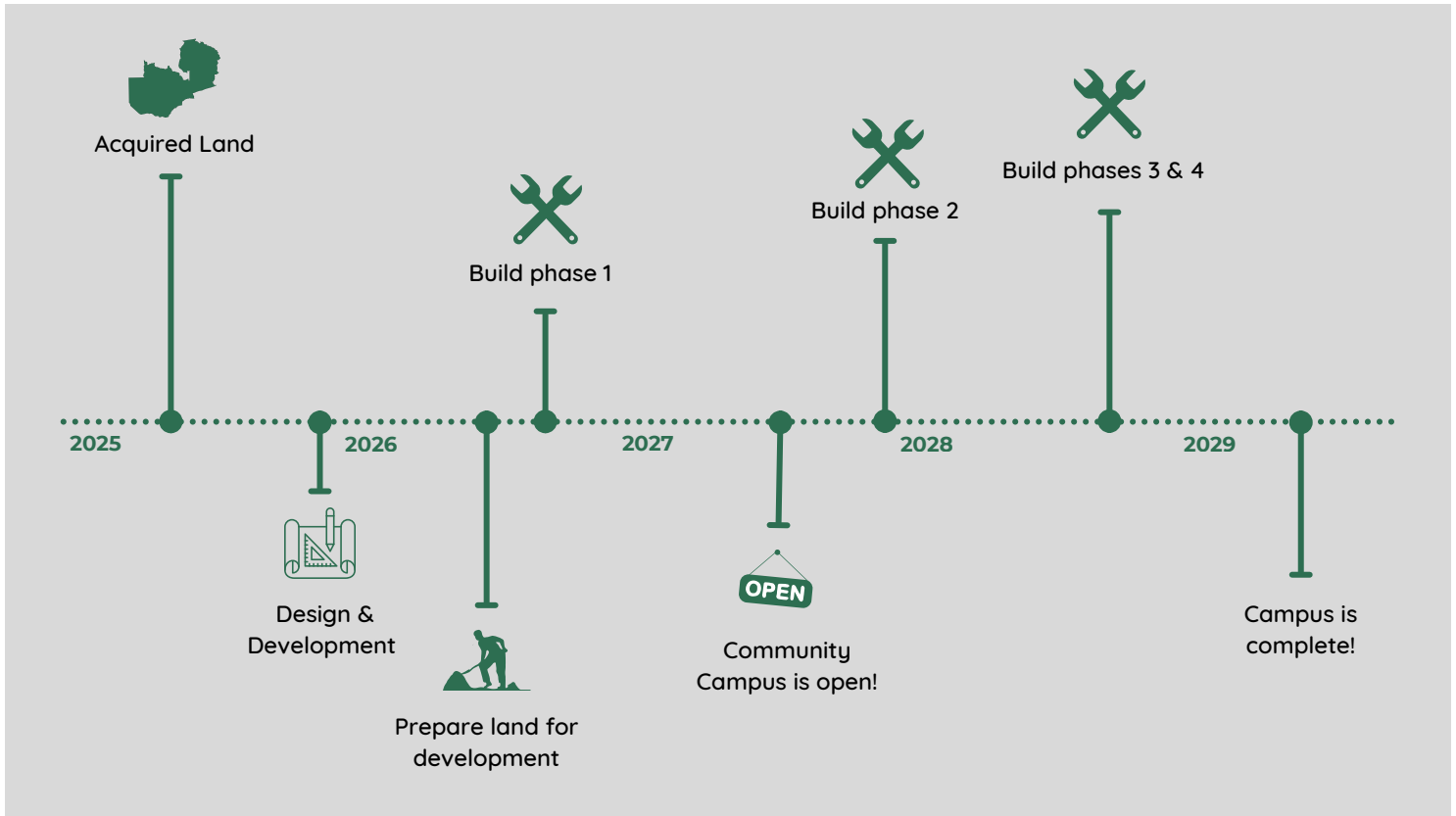
**June 2026**







# HOW WE'LL GET THIS DONE





# SUSTAINABILITY

Environmental sustainability is an important part of the Campus. The campus is designed to minimise impact while keeping long-term operating costs low.

## Solar Power

The campus will be powered primarily by solar panels installed on the roofs of key buildings, providing electricity for lighting, pitch floodlights, the Digital Skills Hub and other facilities across the site.

## Rainwater Harvesting

Rainwater will be collected from the roofs of major buildings and from the artificial pitch. This water will be reused for toilet facilities and for irrigating grass pitches and landscaping.

## Natural Cooling

Buildings will be designed to maximise natural ventilation and shaded spaces, helping keep indoor areas cool while reducing the need for energy-intensive air conditioning.

## Local Materials

Construction will make use of Compressed Earth Blocks (CEBs) produced locally. These materials reduce environmental impact while supporting local employment and skills development.



# PHASE 1 BUILDINGS

# 3G FOOTBALL PITCH (11-A-SIDE)

## A Safe Place to Play

Football is at the heart of Play it Forward. Our teams bring together young people from across the community, providing structured training, mentorship and positive role models.

The artificial 11-a-side football pitch will provide a safe, high-quality playing surface where young people can train and compete throughout the year. It will host training sessions, community leagues and regional tournaments, creating opportunities for participation, talent development and community events.

## Key Features

- Full-size artificial 3G football pitch (no infill)
- Goals and perimeter fencing
- Floodlighting for evening training and matches
- Durable surface suitable for year-round use

## Sponsorship Cost

**£320,000**



# GRASS FOOTBALL PITCH (11-A-SIDE)

## A Safe Place to Play

Alongside the artificial pitch, the 11-a-side grass pitch will provide a natural surface for training, matches and community tournaments.

In future phases of the campus, spectator stands and seating areas will be added to enhance the matchday experience and support larger events.

## Key Features

- Full-size natural grass football pitch
- Irrigation and drainage system
- Durable playing surface for training and matches

## Sponsorship Cost

£110,000



# CHANGING ROOMS

## Supporting Players On and Off the Pitch

The Changing Rooms will provide safe, modern facilities for players, coaches and officials using the Play it Forward Community Campus.

For many young people currently training with Play it Forward, access to proper changing and shower facilities is extremely limited. This building will ensure that players can prepare for training and matches in a safe, dignified and professional environment.

The facility will support football teams, school competitions and community tournaments hosted at the campus.

## Key Features

- Separate changing rooms for boys and girls
- Shower and washroom facilities
- Lockers and equipment storage
- Coach and officials' areas

## Sponsorship Cost

**£90,000**



# ABLUTION BLOCK

## Supporting Safe and Dignified Facilities

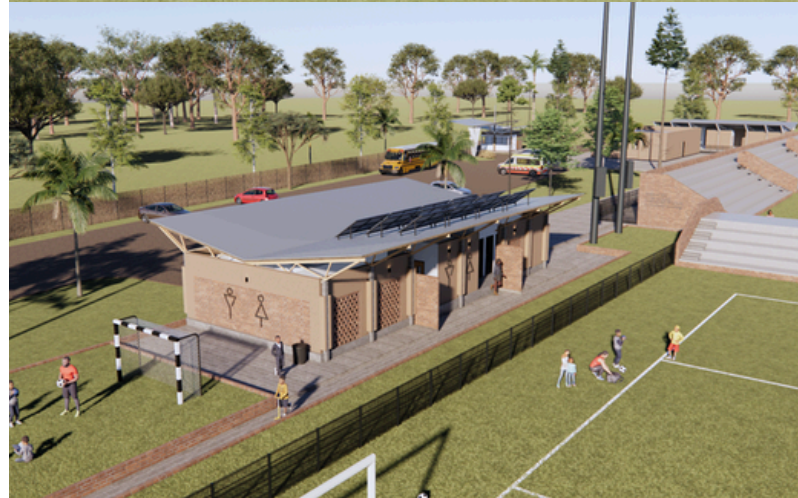
Safe, clean and accessible sanitation facilities are essential for young people participating in sport and community activities. The Ablution Block will provide modern restroom facilities for players, visitors and spectators, helping ensure the campus remains welcoming and inclusive for everyone.

## Key Features

- Male and female toilet facilities
- Accessible design for community use
- Durable and low-maintenance construction
- Located close to the football pitch and community spaces

## Sponsorship Cost

£60,000



# KITCHEN & CANTEEN

## Nourishing Young People

Good nutrition is essential for young people to learn, train and perform at their best. The Kitchen & Canteen will provide a dedicated space to prepare and serve healthy meals for children participating in programmes at the Campus.

The facility will support daily after-school meals and catering for community events, helping ensure young people have access to the food they need to grow, learn and thrive.

## Key Features

- Commercial kitchen for meal preparation
- Canteen seating area for young people and visitors
- Storage for food and supplies
- Facilities to support nutrition programmes and events

## Sponsorship Cost

**£45,000**



# LIBRARY

## A Space for Learning

Education lies at the heart of long-term opportunity. The Library will provide a quiet, inspiring space where young people can read, study and develop a lifelong love of learning.

The library will support literacy programmes, homework clubs and independent study for children and young people across the community.

## Key Features

- Reading and study spaces
- Shelving for books and learning materials
- Quiet learning environment
- Access to educational resources

## Sponsorship Cost

**£40,000**



# DIGITAL SKILLS HUB

## Skills for the Digital Economy

Digital skills are essential for young people to succeed in today's economy. The Digital Skills Hub will provide access to technology, training and mentorship for young people across the community.

Through courses in coding, product design, digital marketing and entrepreneurship, the Hub will equip young people with practical skills for the modern digital economy, opening pathways to further education, employment & entrepreneurship.

## Key Features

- Computer workstations and internet access
- Training space for digital learning programmes
- Technology and coding workshops
- Career and employability training

## Sponsorship Cost

**£50,000**



# CLUBHOUSE

## A Home for Teams and Community

The Clubhouse will act as a central gathering point for players, coaches and visitors at the Play it Forward Community Campus.

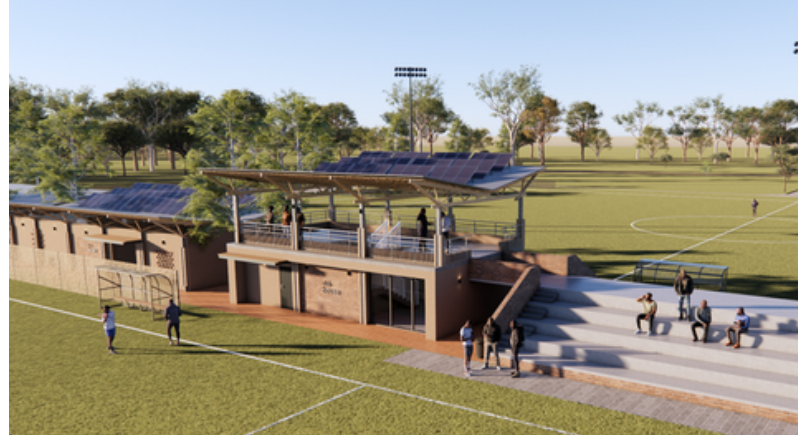
It will provide space for team meetings, match preparation and community engagement, helping create a vibrant and welcoming environment during training sessions and events.

## Key Features

- Team meeting and briefing rooms
- Coach office and administration space
- Bar area serving drinks and light refreshments
- Equipment storage
- VIP viewing platform

## Sponsorship Cost

**£55,000**



# MARKET PAVILION

## Supporting Community Enterprise

The Market Pavilion will be a vibrant gathering space at the heart of the campus - a place where young people, families and visitors can meet, relax and connect.

Inspired by the form of the African baobab tree, the pavilion will provide a shaded open-air structure designed for community life. Built using locally sourced materials such as bamboo and corrugated roofing, it will create a welcoming space for markets, performances and social events.

## Key Features

- Covered market and seating area
- Space for community events and gatherings
- Stage area for music, performances and talks
- Large screen for showing sports and events

## Sponsorship Cost

**£30,000**





Together, these facilities will create one of the most impactful community sports and education spaces in Zambia.

- Provide safe, high-quality sports facilities for 10,000+ young people each year
- Create a safe and welcoming place where young people can learn, play and participate in activities after school
- Deliver digital skills and employability training to 500+ young people annually
- Promote equal opportunities for girls and boys through sport, leadership and community programmes
- Generate sustainable revenue and local economic opportunities through the rental of pitches, conference spaces and the market pavilion
- Create a permanent home for Play it Forward FC where thousands of community members can gather to watch and support local football





# DEDICATE A BRICK

As we build the Play it Forward Community Campus, supporters from around the world can become part of this special place by dedicating a personalised brick.

Bricks can honour loved ones, celebrate important moments, or share messages of encouragement for future generations.

Engraved bricks will be installed in a legacy wall in the reception area in the main admin block, recognising the supporters who helped build this place for future generations.

## Brick Sponsorship

**Standard Brick — £150**

*Up to 20 characters of engraved text*

**Prime Location Brick — £250**

*Up to 40 characters of engraved text*

**Premium Location Brick — £450**

*Up to 60 characters of engraved text*





# SPONSORSHIP OPPORTUNITIES



The Play it Forward Community Campus offers organisations and individuals the opportunity to support the next generation while becoming part of a landmark community project in Livingstone.

Supporters can partner with Play it Forward by sponsoring key facilities within the campus. These spaces will support thousands of young people each year through sport, education and community programmes.

Sponsors will receive recognition through:

- Naming opportunities for facilities and buildings
- On-site personalised signage at the campus
- Recognition across Play it Forward communications
- Opportunities to visit and engage with programmes





# OUR PARTNERS

Our work is made possible thanks to the support of generous partners who believe in the power of sport and education to transform young lives. Play it Forward is proud to work with a growing network of partners who support our mission.



# SUPPORT THIS PROJECT

To discuss partnership or sponsorship opportunities please contact:

**Oliver Brendon**

*Chairman & Founder, Play it Forward*

[oliver@attractiontickets.com](mailto:oliver@attractiontickets.com)

**Jake Criswick**

*CEO, Play it Forward*

[jake@play-itforward.org](mailto:jake@play-itforward.org)

## LEARN MORE

[play-itforward.org](http://play-itforward.org)



Registered with  
**FUNDRAISING  
REGULATOR**



Play it Forward is a registered charity in England and Wales (charity number 1177278) and an NGO in Zambia (registration number RNGO101/1341/2020).

372 Coldharbour Lane, London, SW9 8PL, UK

42 Kabompo Rd, Livingstone, Zambia